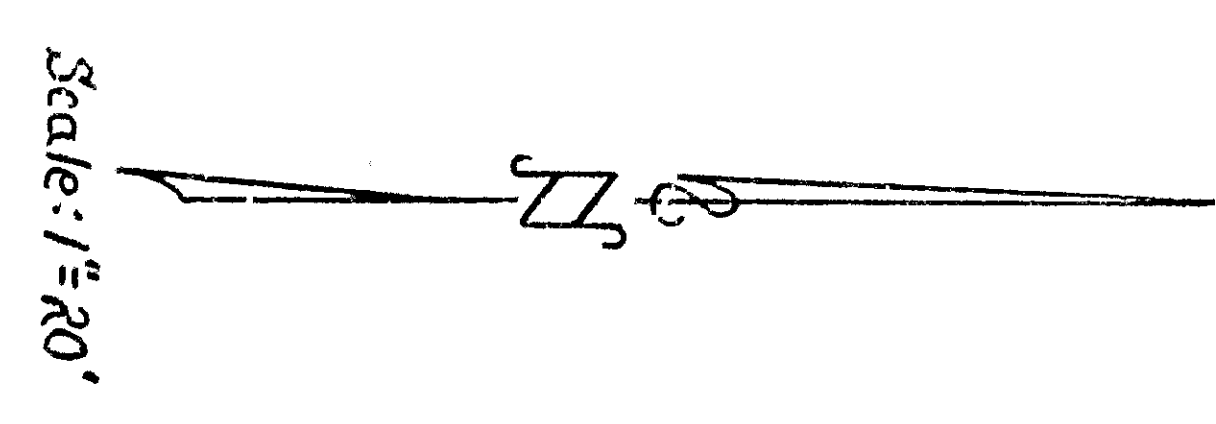


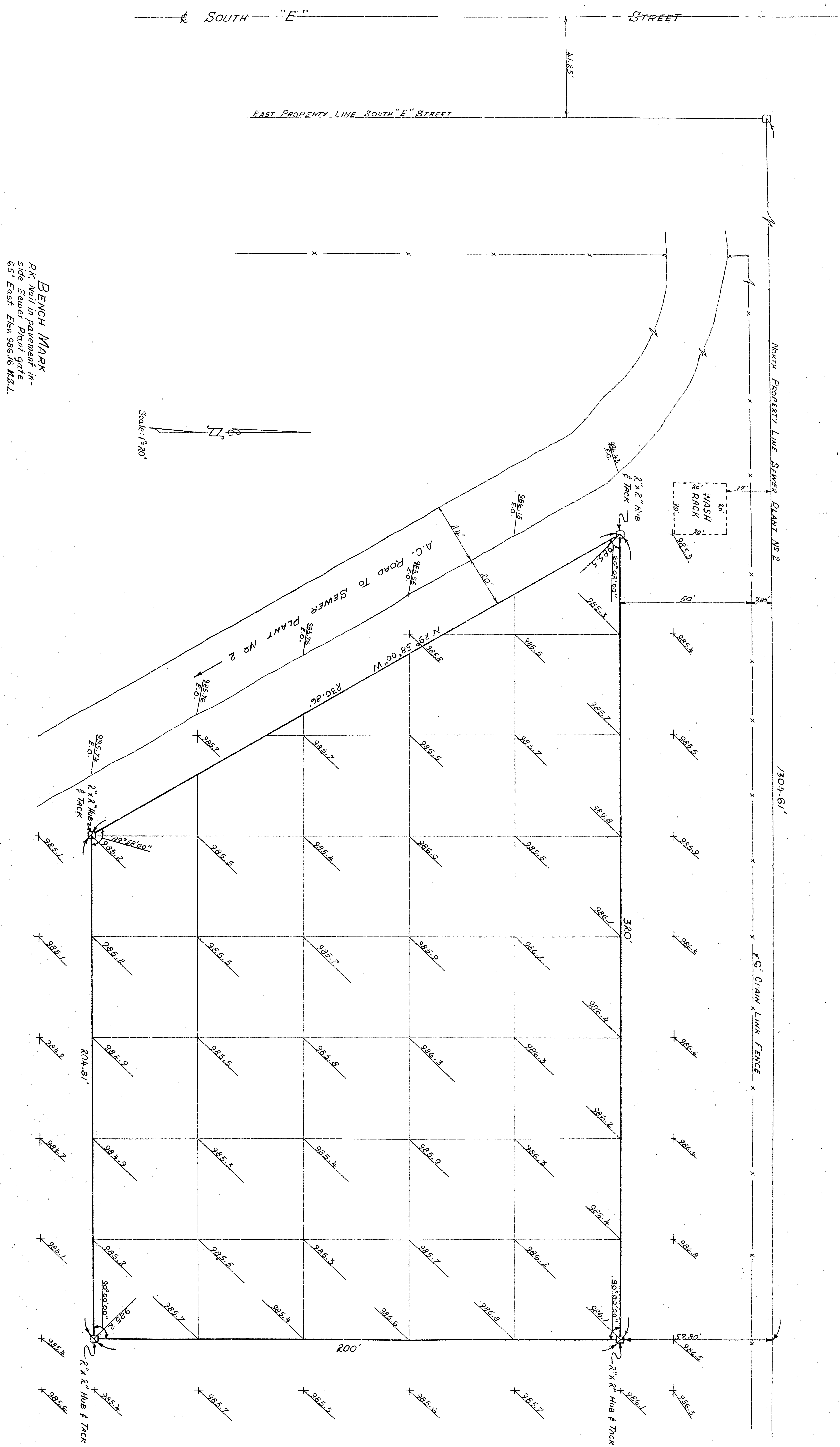
BENCH MARK
 2 1/2" Nail in pavement in
 side sewer plant site
 05 Elev. 784.3666 M.S.L.



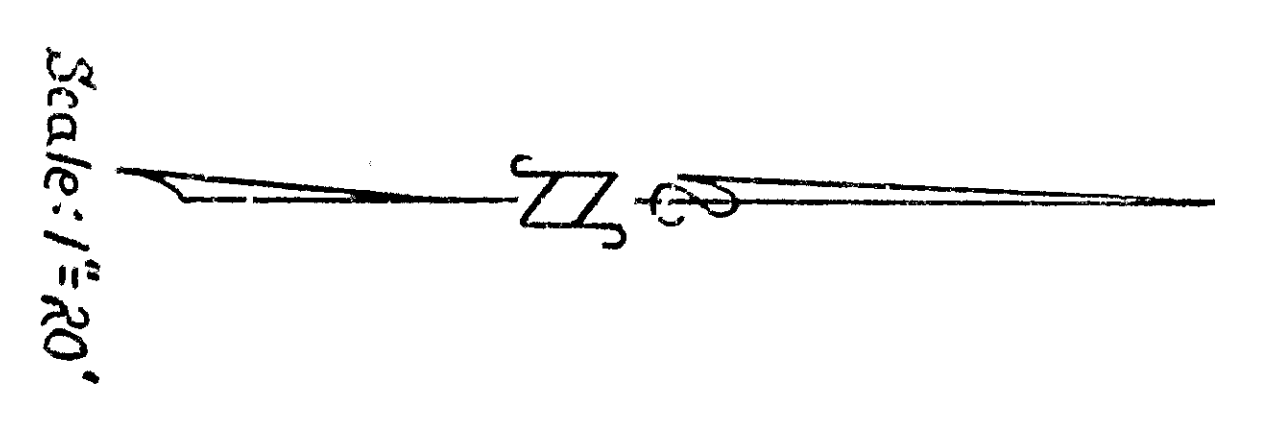
**PROPOSED
 BLOOD BANK SITE
 SEWER PLANT NO. 2
 TOPO & ELEV.**

G. E. Nickerson
 CITY ENGINEER
 R.C.E. No. 13553
 MAY 27, 1966

DRAWN BY: Harrel
 CHECKED BY: [Signature]



BENCH MARK
 2 1/2" Nail in pavement in
 side sewer plant site
 OS Elev. 264.36 M.S.L.



**PROPOSED
 BLOOD BANK SITE
 SEWER PLANT NO. 2
 TOPO & ELEV.**

G. E. Nickerson
 CITY ENGINEER
 R.C.E. No. 13553
 MAY 27, 1966

DRAWN BY: Harrel
 CHECKED BY: [Signature]